

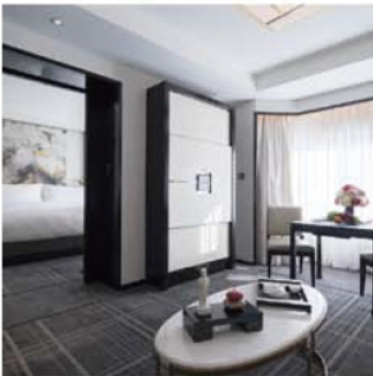
F A C T S A N D I N F O R M A T I O N



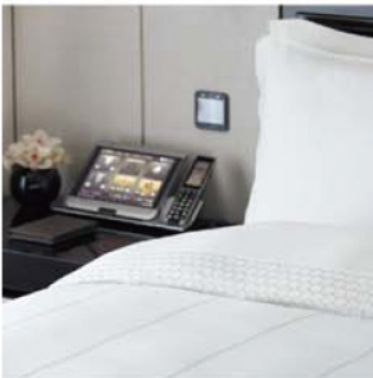
THE PENINSULA
BEIJING



Hotel Exterior



Superior Suite



In- room technology



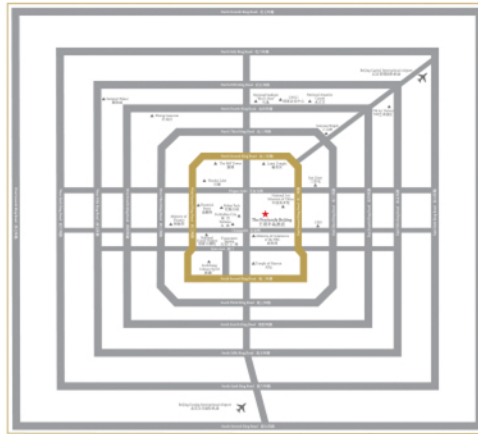
Beijing Suite

DESCRIPTION

Opened in 1989, The Peninsula Beijing has a proud heritage as the first luxury hotel in the Chinese capital. Following a complete renewal inspired by China's imperial architecture, exquisite art and cultural traditions, The Peninsula Beijing sets spectacular new standards as the premier all-suite hotel in Beijing. Guests staying for business or leisure enjoy luxurious suite accommodations, award-winning cuisines at three destination restaurants and rejuvenating spa journeys enhanced by unparalleled personal service and cutting-edge technology.

LOCATION

The Peninsula Beijing is recognised as the premier address in the capital for business and leisure travellers. Perfectly located in the centre of the city's Wangfujing shopping district and within walking distance to the Forbidden City and Tiananmen Square, the hotel is also easily connected to the Second Ring Road, offering unrivalled proximity to the main commercial, tourist and diplomatic areas.



ACCOMMODATION

In a feat of engineering and architectural flair, The Peninsula Beijing's original 525 rooms and suites have been reduced and reimagined to just 230 – starting at 60 sq m/645 sq ft. Inspired by the design of luxury yachts and offering unparalleled luxury and comfort in a suite-style setting, guest rooms have been meticulously designed to offer a separate living, dining, bedroom and walk-in closet. Chic and understated, and with a sense of timeless sophistication and enduring luxury, a welcoming residential ambience and appreciable sense of space await you.

All suites offer the following features:

- High-speed wired and wireless Internet access
- VOIP long-distance calls
- Interactive digital bedside panels (choice of 11 languages)
- Flat-screen HD TV: 40 international satellite and terrestrial TV channels
- Audio-visual centre featuring a Blu-Ray player with an iPod/iPad docking station, memory card reader and sound bar speaker system
- Complimentary movies through video-on-demand
- All-in-one fax/scanner/printer/copier with office automation
- Bedside multi-adapter charger
- Coffee- and tea-making facilities
- Nail dryer

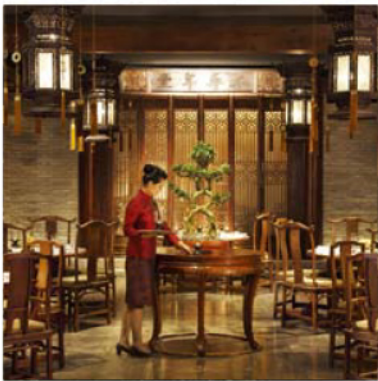
Suite	Size in sq m/ sq ft	Number of Rooms	Best Available Rate (RMB)
Superior Suite	60 sq m/645 sq ft	16	3,400
Deluxe Suite	65 sq m/700 sq ft	81	3,500
Duplex Suite	74 sq m/769 sq ft	18	3,700
Premier Suite	75 sq m/807 sq ft	54	3,900
Grand Premier Suite	93 sq m/1,001 sq ft	8	4,900
Grand Premier Suite	102 sq m/1,098 sq ft	18	4,900
Wangfujing Suite	110 sq m/1,184 sq ft	17	5,700
Beijing Suite	165 sq m/1,776 sq ft	17	8,700
The Peninsula Suite	660 sq m/7,104 sq ft	1	98,000



The Lobby



Jing



Huang Ting



Yun Summer Lounge

DINING

With its collection of eclectic restaurant and dining options, The Peninsula Beijing promises to bring a new dimension of dining to the City of Heaven. Open daily, three venues showcase the very best of China and The Peninsula – The Lobby, Jing restaurant and bar, and Huang Ting Cantonese restaurant and the hand-crafted cocktails on The Peninsula Yun, the rooftop summer lounge.

THE LOBBY

A vibrant all-day dining venue popular for The Peninsula signature Afternoon Tea. The Lobby can accommodate up to 128 guests.

Breakfast: 6:00 am – 10:00 am (Monday – Friday)
6:00 am – 10:30 am (Saturday – Sunday)

All-day dining: 11:00 am – 11:00 pm

Afternoon Tea: 2:00 pm – 6:00 pm Daily

Tel: +86 10 8516 2888 ext. 6759

Dress code: Smart Casual

JING

Awarded its first Michelin star in November 2020, Jing serves contemporary French gastronomy with subtle Asian influences. Chef de Cuisine Julien Cadiou curates exquisite dining experiences paired with vintage global wines and rare Krug Champagnes in an elegant venue evoking a secret garden. The main restaurant can accommodate up to 126 guests, with a Chef's Table for up to 10 guests and the Wine Cellar hosts a maximum of 14 guests.

Lunch: 12:00 noon – 2:00 pm

Dinner: 6:00 pm – 10:30 pm

Bar: 5:30 pm – 11:00 pm

Tel: +86 10 8516 2888 ext. 6758

Dress code: Smart Casual

HUANG TING

Reflecting an interpretation of a traditional nobleman's courtyard house, Huang Ting features a large collection of Chinese antiques and serves authentic dim sum, exquisite Cantonese cuisine and Beijing specialties for lunch and dinner. A range of Chinese teas is available at the unique tea house, offering 50 varieties for up to 20 guests. The restaurant has four private dining rooms for up to 12 guests each, and the main dining room can accommodate up to 80 guests.

Lunch: 11:30 am – 2:30 pm

Dinner: 6:00 pm – 10:30 pm

Tel: +86 10 8516 2888 ext. 6757

Dress code: Smart Casual

YUN SUMMER LOUNGE

The premier open-air rooftop summer lounge in Wangfujing re-opens with hand-crafted cocktails, sharing bites and easy tunes to set the stage for dramatic Beijing sunsets.

Opening Hour: Seasonal Venue

Tel: +86 10 8516 2888 ext. 6752

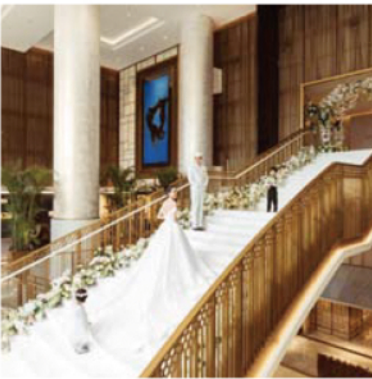
Dress code: Smart Casual



Function Room



Outside Catering



Wedding at The Peninsula Beijing



The Peninsula Arcade

EVENTS & CATERING

The Peninsula Beijing houses a selection of the most elegant banquet and function spaces in Beijing, providing flexibility for every type of event, from intimate meetings to glamorous galas.

The Wang Fu Ballroom is an exceptional setting for both private parties and business events. With its stylish design and sophisticated ambience, this impressive space can accommodate up to 600 guests in a variety of configurations. For smaller events and meetings, the ballroom can be divided into separate sections. There are four additional function rooms with built-in screens to serve as break-out rooms.

Features include:

- Wired and wireless high-speed Internet access and audio-visual services
- Computer rental service
- Outside catering, including banquets for 10 to 300 people at the Great Wall, Summer Palace, Prince Gong Mansion and other places of interest

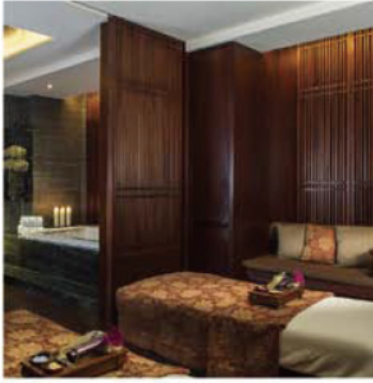
Function Room	Dimension		Capacity						
	LxWxH (metres)	Gross area (sq m)	Banquet Dinner	Cocktail Reception	Theatre	Classroom	U-Shape	Hollow Shape	Boardroom
Wang Fu	27.50x19.55x5.50	564.70	300	600	450	300	150	120	130
Wang Fu I	13.75x19.55x5.50	289.30	120	250	200	100	60	50	60
Wang Fu II	13.75x19.55x5.50	275.40	120	250	200	100	60	50	60
Tang Shi	22.40x8.90x3.40	199.30	100	120	100	70	60	70	50
Tang Shi I	11.00x8.90x3.40	97.90	40	60	40	30	30	35	25
Tang Shi II	11.30x8.90x3.40	100.50	40	60	40	30	30	35	25
Song Ci	22.40x8.90x3.40	199.30	100	120	100	70	60	70	50
Song Ci I	11.00x8.90x3.40	97.90	40	60	40	30	30	35	25
Song Ci II	11.30x8.90x3.40	100.50	40	60	40	30	30	35	25
Yuan Qu	9.60x8.85x3.20	84.96	40	60	70	30	-	-	-
Qing Shu	15.20x10.00x3.20	155.00	60	80	80	50	-	-	-
Qing Shu I	7.60x10.00x3.20	76.00	30	40	40	20	25	30	20
Qing Shu II	7.60x10.00x3.20	76.00	30	40	40	20	25	30	20

WEDDING DREAMS BROUGHT TO LIFE

The Peninsula Beijing is the perfect setting for a dream wedding. Tailor-made menus, curated experiences, impeccable service and spectacular venues set the scene for a magical day to cherish forever.

THE PENINSULA ARCADE

The three-level shopping arcade houses world-class brands and is viewed as one of the most prestigious shopping venues for luxury goods in the capital.



The Peninsula Spa

THE PENINSULA SPA

Unwind in a relaxed oasis offering deeply personalised spa experiences across 1,370 sq m of the ultimate in luxury and tranquility. A selection of signature treatments that blend Asian, European and Ayurvedic philosophies that creates a unique holistic experience.

FITNESS CENTRE

Facilities in the fitness centre include an 18x8 m indoor heated swimming pool, a completely redesigned gymnasium with a wide range of state-of-the-art gym equipment, including cardio and strength machines, free weight training, and a dedicated studio for yoga and Pilates.



Swimming Pool

TRANSPORTATION

A fleet of bespoke Rolls-Royce and BMW limousines equipped with complimentary Wi-Fi connectivity is available for airport transfers and hourly hire.

RESERVATIONS

Reservations can be made 24 hours a day, 7 days a week for any of our hotels through:
Global Customer Service Centre
5/F, The Peninsula Hong Kong, Salisbury Road, Tsim Sha Tsui
Hong Kong, SAR
Telephone: +852 2926 2888 Facsimile: +852 2732 2933
Email: reservationgscsc@peninsula.com



Transportation

Toll-Free Numbers:

• ASIA PACIFIC

Australia: 1 800 116 888
China: 4001 200 618
Hong Kong: 2926 2888
India: 000 800 852 1388
Japan: 0120 348 288
Singapore: 800 8526288
South Korea: 00798 8521 6388
Taiwan: 00801856908
Thailand: 1800011888

• EUROPE

France: 0800 915 980
Germany: 0800 181 8418
Italy: 800 789 365
Russia: 810 800 2536 1012
Spain: 900 937 652
Switzerland: 0800 562923
UK: 0800 7830388

• MIDDLE EAST

Bahrain: 8000 0889
Saudi Arabia: 800 8 852 288
UAE: 800 0852 07088

• AMERICAS

Argentina: 0800 888 7227
Brazil: 0800 891 9601
Canada: 1866 308 8881
Mexico: 01 800 123 4646
USA: 1 866 382 8388

* Toll-free access number is only available through Saudi Telecom Company (STC).



Peninsula Academy

The Peninsula Beijing
8 Goldfish Lane, Wangfujing, Beijing 100006, The People's Republic of China
Telephone: +86 10 8516 2888 Facsimile: +86 10 6510 6311
Email: pbj@peninsula.com

Scan our QR codes to receive our updates



WeChat



Weibo

8 Goldfish Lane, Wangfujing, Beijing 100006, The People's Republic of China
+86 10 8516 2888 pbj@peninsula.com peninsula.com

HONG KONG · SHANGHAI · BEIJING · TOKYO · NEW YORK · CHICAGO · BEVERLY HILLS · PARIS · BANGKOK · MANILA
Under Development LONDON · ISTANBUL · YANGON