



THE MURRAY

HONG KONG

—  
A NICCOLO HOTEL



PRESTIGIOUS EVENTS AND  
LASTING MEMORIES

ONCE A PROMINENT SEAT  
OF GOVERNMENT, NOW  
REIMAGINED BY NICCOLO  
HOTELS AS THE LAST WORD  
IN CONTEMPORARY CHIC,  
THE MURRAY, HONG KONG,  
A NICCOLO HOTEL IS THE MOST  
INFLUENTIAL OF CITY ICONS.

One of the great architectural prizes in Hong Kong SAR of China, the flagship 1960s building is as recognisable for the breathtaking archways that frame its entrance as it is notable in the city's remarkable history.

Beautifully restored and masterfully reconceived as a beacon of style by British architects Foster + Partners, the 336 room hotel adds a fresh dynamic to Hong Kong's most desirable of addresses. A new sense of glamour for the savvy traveller.

Raised high on Central District's Cotton Tree Drive, and nestled beside eight hectares of verdant parkland, The Murray affords its guests not only definitive views of the city and The Peak, but also a sanctuary from the world below.

In short, The Murray takes Niccolo's uncompromising promise of "New Encounters. Timeless Pleasures" to a new level.



## LOCATION

The Murray enjoys a unique location between the central commercial hub and the green oasis of Hong Kong Park. The Central MTR subway station is within a 10-minute walk. From this major station, any part of the city is easily reached.

## FACILITIES

The wellbeing of our guests is essential to our ethos. Our in-house guide to healthy living highlights the best jogging trails, detailed gym programmes, and super-food menus. Guests seeking rejuvenation can relish in the nourishment of customised rituals in one of our five exclusive spa suites, followed by a dip in our elegant indoor pool.

## SIGNATURE EXPERIENCES

Our Signature Experiences go the extra mile to make every stay remarkable. Multilingual **Niccolo City Insiders**, a new generation of in-the-know concierges, offer access and information to Hong Kong's best-kept secrets. The **Niccolo Lecture Series** invites guests to gain insights and ideas from some of the world's most respected thought leaders.



## GUESTROOMS AND SUITES

### Accommodation

Extraordinarily spacious accommodation awaits you. Finished in natural stone, leather and plush textiles, these sanctuaries radiate sophistication. In an architectural masterstroke, each room and suite features large, recessed windows. This innovation invites abundant daylight into the rooms without attracting the heat of the sun, winning many accolades for energy-efficiency.

Fine bed and bath amenities coupled with the team's care for detail and dedication to exemplary anticipatory service will make each stay a delightfully comfortable and memorable encounter.

- Bath amenities by Grown Alchemist
- Heated bathroom mirrors
- Luxury linens and pillows
- Electronic in-room safe
- Laundry and valet
- 24-hour in-room dining service
- Personal Bar with coffee machine and kettle
- Complimentary broadband wired and wireless internet connectivity
- Smart phone docking station and bedside lighting controls

## THE MURRAY

HONG KONG

A NICCOLO HOTEL



Room Type	Area		No. Room
	Sqm	Sqf	
SUPERIOR	38	409	70
N1 DELUXE	47	505	70
N2 GRAND	50	540	93
N3 GRAND DELUXE	50	540	65
EXPLORER SUITE	75	810	10
SIGNATURE SUITE	75	810	24
COTTON TREE & PARK SUITE	100	1,076	1&1
PENTHOUSE SUITE	125	1,345	1
THE MURRAY SUITE	225	2,422	1

Capacities are indicative and subject to regulation approval.

## Guestrooms

From 38 to 50 square metres, The Murray's guest rooms are generously proportioned living spaces. Each comes with a beautifully designed en-suite wet area, featuring rare marble-lined walls and floor, as well as luxurious grooming amenities by Grown Alchemist. N2 Grand and N3 Grand Deluxe rooms offer a separate bath and shower room.

## Suites

From 75 to 225 square metres in size, The Murray's elegantly appointed suites surpass for space and comfort – each with separate, sumptuously furnished living areas, a grand bathroom, walk-in closet and personal bar. The eponymous 225 square metre Murray Suite, with its panoramic views of the city, and the 125 square metres Penthouse Suite provides the ultimate accommodation for well-heeled travellers used to the finest creature comforts.



# THE MURRAY

HONG KONG

A NICCOLO HOTEL

## RESTAURANTS & BARS

**Popinjays**, our stunning rooftop restaurant, bar and terrace offers breathtaking views of the city, parks and The Peak from its exquisite dining terraces. European cuisine, conceptual cocktails and delicious small plates served at the bar, make this the venue of choice for Hong Kong's most discerning palates.

From daily specials inspired by the season's best to engaging tableside service and live carvings in the evening, **The Tai Pan** embraces modern bistro fare while spotlighting artisanal produce. With both indoor and outdoor seating, this is the perfect choice for business lunches or social dinners.

An all-day dining venue, the **Garden Lounge** brings an elegant touch to the teatime experience. Either indoors or out on the pet-friendly terrace, world-class pâtissiers, baristas and brew masters serve contemporary afternoon teas with a twist.

**Murray Lane**, our lobby bar, serves craft beers, fine wines and cocktails perfected by revered mixologists.

The **Beer Garden** offers a unique selection of premium craft beers, casual cocktails and a gastropub menu of delicious bar bites. The al fresco garden also offers a perfect setting for barbecue dinner.

**MIÁN** will be the new dining destination in Hong Kong for those looking for the eight great regional cuisines of China. within a stylish and elegant ambiance. With its seamless service, contemporary interiors and terrace, it is the ideal setting for memorable gatherings.

## MOMENTOUS MEETINGS & EVENTS

Designed from the ground up to be the foremost of social, meeting and event spaces in the city, The Murray is peerless.

Distinction, quality, capacity and service define our approach to facilitating gatherings. Hosting is our specialism. We are as skilled in the art of wedding and celebration design as we are in the organisation of launches, shows and business meetings.

Whether your event is modest or maximalist, powered by seamless technology or celebrating the simple pleasure of togetherness, set indoors or under the sun, we have the space and the expertise to realise your vision and enchant your guests.

### Corporate Events

From conferences, exhibitions and other prominent gatherings in the contemporary Niccolo Room to private meetings in our inter-connected, ultra-smart boardrooms, The Murray offers organisers an array of meeting spaces and packages to select from.

### Celebrations and Social Events

Be it a full moon dinner to spread the new found joy, a lavish birthday gathering, or an indulgent annual dinner to reward success, celebrations at The Murray promise to be truly refined and memorable.

From the divisible and contemporary Niccolo Room, the iconic and all-weather event space The Arches, the pet-friendly Cotton Tree Terrace in an alfresco garden setting, to stylish restaurants and bars available for private hire, The Murray is designed to be the epicentre of social events in the city.

### Events in Top Suites

For discrete launch events, private viewings, stylish meetings and occasions of an exclusive nature, the spacious and opulent top suites offer an all-inclusive solution designed to impress. Situated in proximity to each other on the 23rd floor of the hotel, the four top suites – The Murray Suite, Penthouse Suite, Park Suite and Cotton Tree Suite surpass for space and comfort.

With hypnotic views of Hong Kong's cityscape or parks, each suite boasts an elegantly furnished living area, a separate dining area, a grand bathroom and seamless technology.

### Car Showcases

Framed by the iconic archways, the car park in the former Murray Building was transformed into The Arches, a semi-outdoor function space at The Murray. The Arches is now connected to the open-air Cotton Tree Terrace via a ramp which was once a driveway to the car park. Versatile, spacious and sure to impress, The Arches and Cotton Tree Terrace offer the perfect setting for car showcases and exhibitions.

FEATURES

GARDEN LEVEL (UG/F)	COTTON TREE TERRACE (BEER GARDEN)	130 sqm	<ul style="list-style-type: none"> <li>• Al fresco and pet-friendly venue</li> <li>• Garden setting</li> <li>• Ideal for wedding ceremonies, cocktails and car displays</li> </ul>
GARDEN LEVEL (UG/F)	THE MURRAY LAWNS		<ul style="list-style-type: none"> <li>• Outdoor garden setting</li> <li>• Caters to cosy celebrations such as afternoon tea parties, bridal showers, gender reveal parties, baby showers and pet gatherings</li> </ul>
LEVEL 1	THE ARCHES	430 sqm	<ul style="list-style-type: none"> <li>• Unique ramp that wraps around the building perimeter</li> <li>• Ideal for fashion catwalks, wedding ceremonies and car displays</li> <li>• Semi al fresco venue</li> </ul>
LEVEL 2	THE MURRAY BOARDROOMS	from 38 to 75 sqm	<ul style="list-style-type: none"> <li>• Two boardrooms each with natural daylight</li> <li>• Flexible venue for private meetings and specialised events</li> <li>• Vistas of the urban landscape</li> <li>• 65" flat screen TV and video conferencing facilities</li> </ul>
LEVEL 25	NICCOLO ROOM	425 sqm	<ul style="list-style-type: none"> <li>• Ceiling covered with luminous textile panels for custom displays</li> <li>• Two end walls each fitted with a 6 X 3 meters LED screen for projections</li> <li>• Rectangular room divisible into eight individual spaces and a pre-function area</li> <li>• Ideal for wedding banquets, conferences and cocktails</li> </ul>
ROOFTOP LEVEL 26	POPINJAYS	355 sqm	<p>Indoor:</p> <ul style="list-style-type: none"> <li>• Restaurant serving modern European cuisine</li> <li>• Ideal for exclusive events, celebrations and cocktails</li> <li>• The Aviary private dining room for up to 20 guests, with an adjoining private terrace</li> </ul>
		360 sqm	<p>Outdoor:</p> <ul style="list-style-type: none"> <li>• Panoramic 270 degree views, overlooking The Peak, St John's Cathedral and Hong Kong Park</li> <li>• Bar tended by leading mixologists</li> </ul>



RESTAURANT CAPACITIES

		OUTDOOR	INDOOR	PRIVATE DINING
LOBBY LEVEL (LG/F)	MURRAY LANE	30 seats	30 seats 105 sqm 1,130 sqf	
GARDEN LEVEL (UG/F)	GARDEN LOUNGE	80 sqm 860 sqf	68 seats 175 sqm 1,875 sqf	
	THE TAI PAN	73 sqm 785 sqf	68 seats 165 sqm 1,775 sqf	
	THE MURRAY LAWNS	30 seats		
	COTTON TREE TERRACE (BEER GARDEN)	50 seats 130 sqm 1,400 sqf		
	MIÁN	50 seats 120 sqm 1,290 sqf	90 seats 225 sqm 2,420 sqf	3 x 6 seats 3 x 8 seats 1 x 10 seats
ROOFTOP	POPINJAYS BAR		26 seats 85 sqm 915 sqf	
	RESTAURANT		92 seats 210 sqm 2,260 sqf	1 x 20 seats
	TERRACE	400 guests 360 sqm 3,865 sqf		

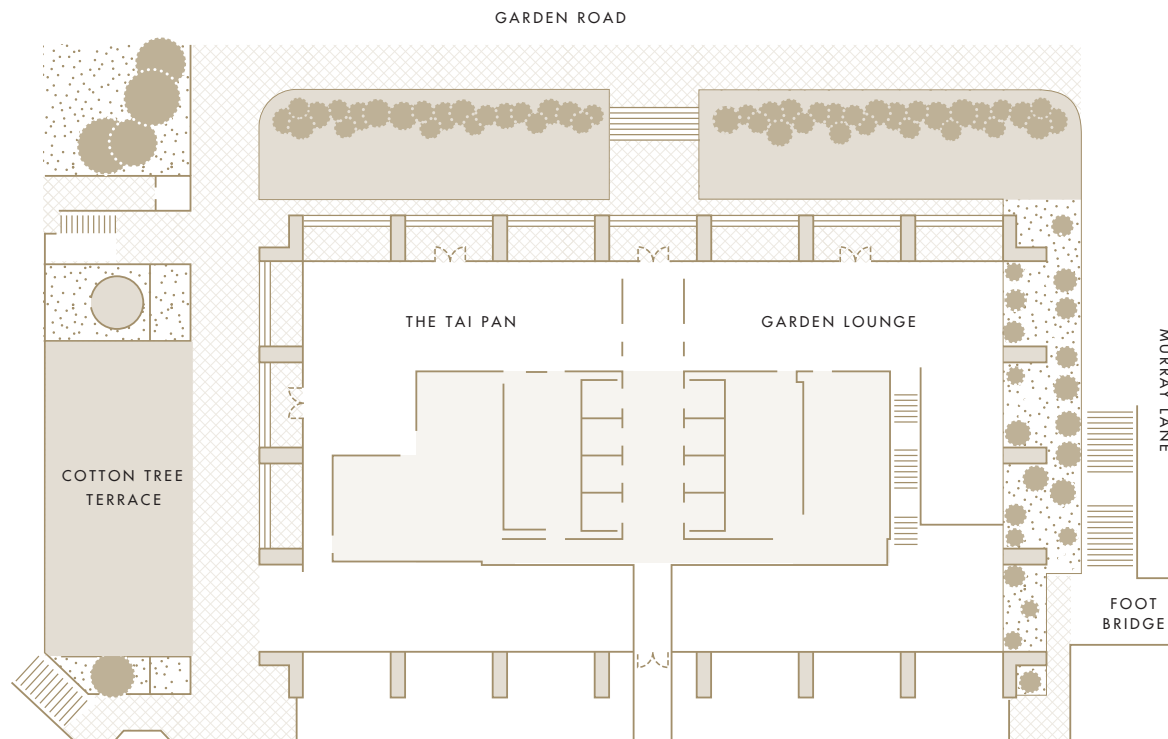
A wide-angle photograph of an outdoor terrace area. The terrace is paved with light-colored stone tiles and is furnished with several sets of wicker chairs and tables. Each set includes a small vase of white flowers. The terrace is bordered by a white wall with large, arched openings. The arches are supported by thick, white columns. The wall has a gold-colored decorative band. In the background, a multi-story building with many windows is visible. The scene is brightly lit, suggesting a sunny day.

COTTON TREE TERRACE

## GARDEN LEVEL (UG/F)

### Cotton Tree Terrace (Beer Garden)

The stately stone arches of our upper ground floor define the unique style of this versatile outdoor space. Within the pet-friendly terrace's 130 sqm, social events accommodate up to 100 guests.



## THE MURRAY


HONG KONG

A NICCOLO HOTEL

Venue	Set Up		Area	
	Cocktail	Theatre	Sqm	Sqf
COTTON TREE TERRACE	100	100	130	1,400

Capacities are indicative and subject to regulation approval.





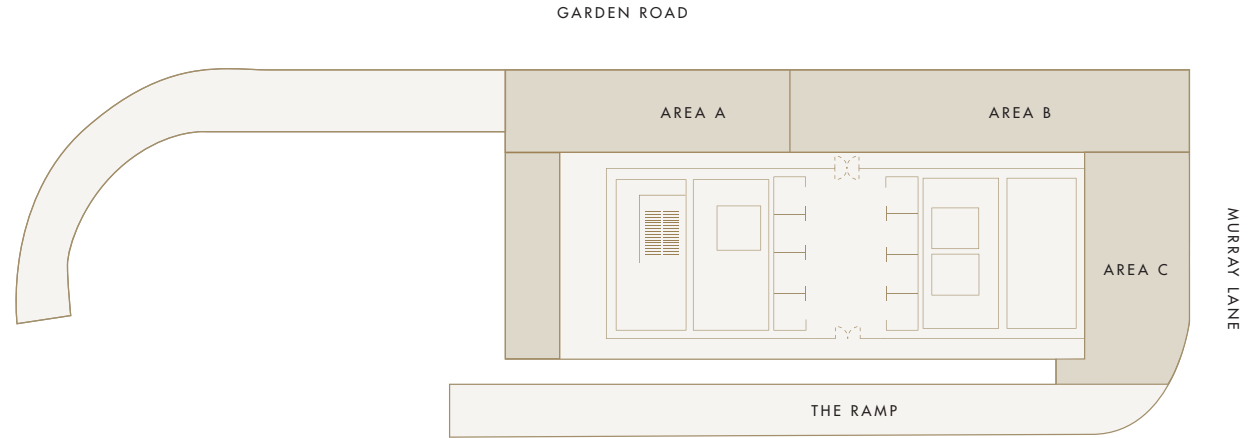
THE ARCHES

## LEVEL 1

### The Arches

What was once a carpark ramp following the inner perimeter walls of the emblematic Murray Building is now a distinctively unique event space.

The Arches is semi-outdoors, offering a unique setting quality from both a practical and experiential perspective. Sheltered overhead and with large arched apertures inviting natural ventilation, this is a venue most suited to weddings, runway shows, exhibitions, car showcases and corporate gatherings.



Venue	Set Up		Area		Headroom	
	Cocktail	Theatre	Sqm	Sqf	H(m)	H(f)
<b>THE ARCHES</b>	310	280	430	4,628	5 - 10	16 - 33
<b>AREA A</b>	100	100	155	1,668	5	16
<b>AREA B</b>	150	120	180	1,937	5	16
<b>AREA C</b>	60	60	95	1,022	5	16
<b>THE RAMP</b>			145	1,560	5 - 10	16 - 33

# THE MURRAY

HONG KONG

A NICCOLO HOTEL



THE MURRAY BOARDROOMS



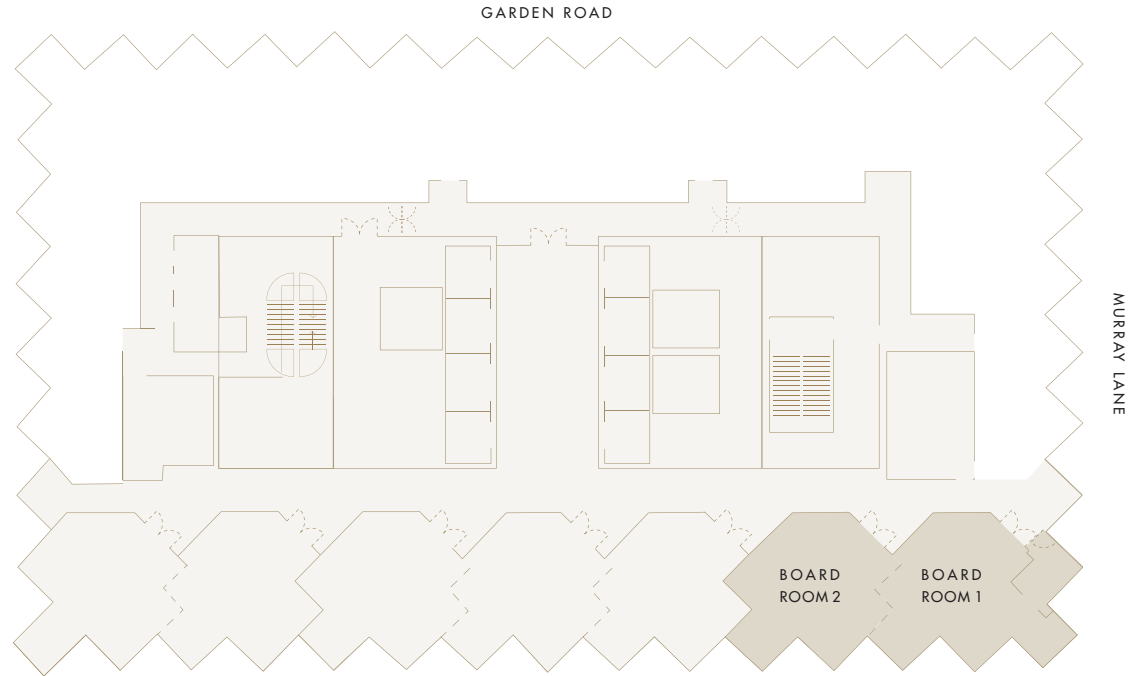
## LEVEL 2

### The Murray Boardrooms

In each of the two ultra-smart rooms, natural daylight cascades through the oversized windows that grace and exemplify the building's iconic façade.

The boardrooms which accommodate up to eight persons each range in size. They are well-equipped with 65" TV screens, video conferencing facilities and are self-contained, making them perfect for high-level private meetings or virtual events.

If a larger space or zoning is required, adjacent rooms can be interconnected.



## THE MURRAY

HONG KONG

A NICCOLO HOTEL

Venue	Area		Headroom	
	Sqm	Sqf	H(m)	H(f)
BOARDROOM 1	40	430	2.4	8
BOARDROOM 2	38	390	2.4	8

Capacities are indicative and subject to regulation approval.



NICCOLO ROOM





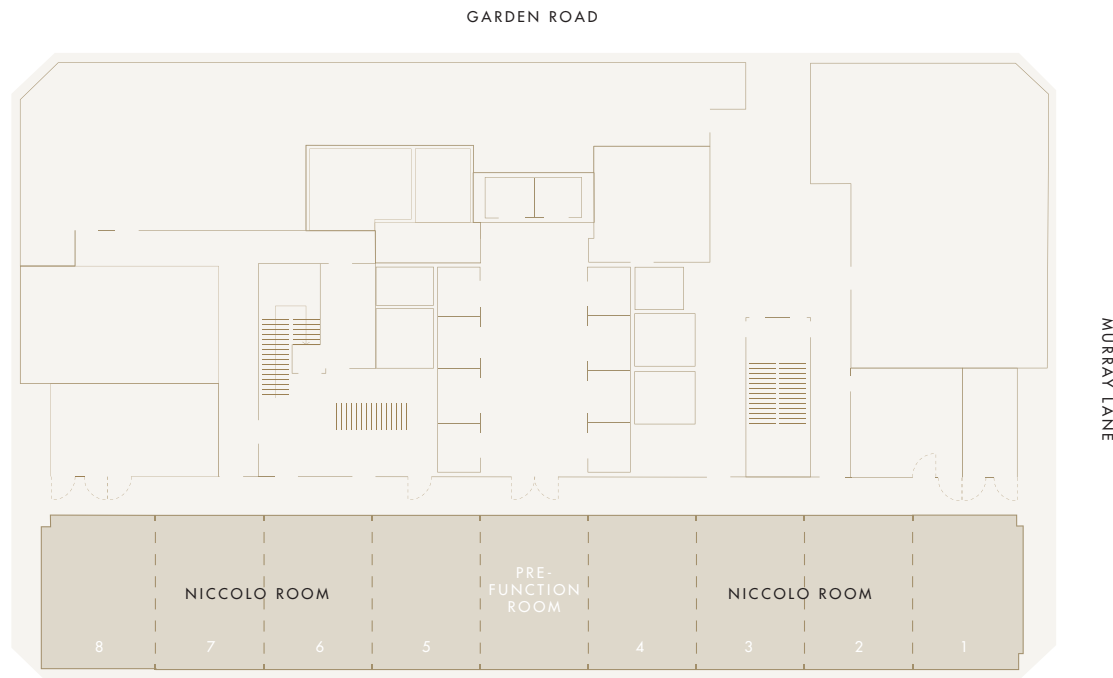
## LEVEL 25

### Niccolo Room

Our largest indoor meeting space is the Niccolo Room. Stylish, convivial celebrations such as weddings and cocktail parties are as at home here as conferences and exhibitions.

To create breakout rooms or a pre-function area, the room can be seamlessly partitioned into two or more spaces. These individual areas are each outfitted with wall panels that slide back to reveal 65" TV screens. Overhead are luminous textile lighting panels that can be programmed to provide a perfectly lit ambiance for your event.

On the ceiling, and on two opposing walls, cutting-edge LED panels are primed to project your customised displays. And to host your guests in style, our resident chefs offer an array of Asian and Western menus for your selection.



Venue	Set Up					Area		Headroom	
	Cocktail	Banquet	Theatre	Classroom	U-shape	Sqm	Sqf	H(m)	H(f)
NICCOLO ROOM	300	240	340	198	129	425	4,550	3.3	11

# THE MURRAY

HONG KONG

A NICCOLO HOTEL

Capacities are indicative and subject to regulation approval.



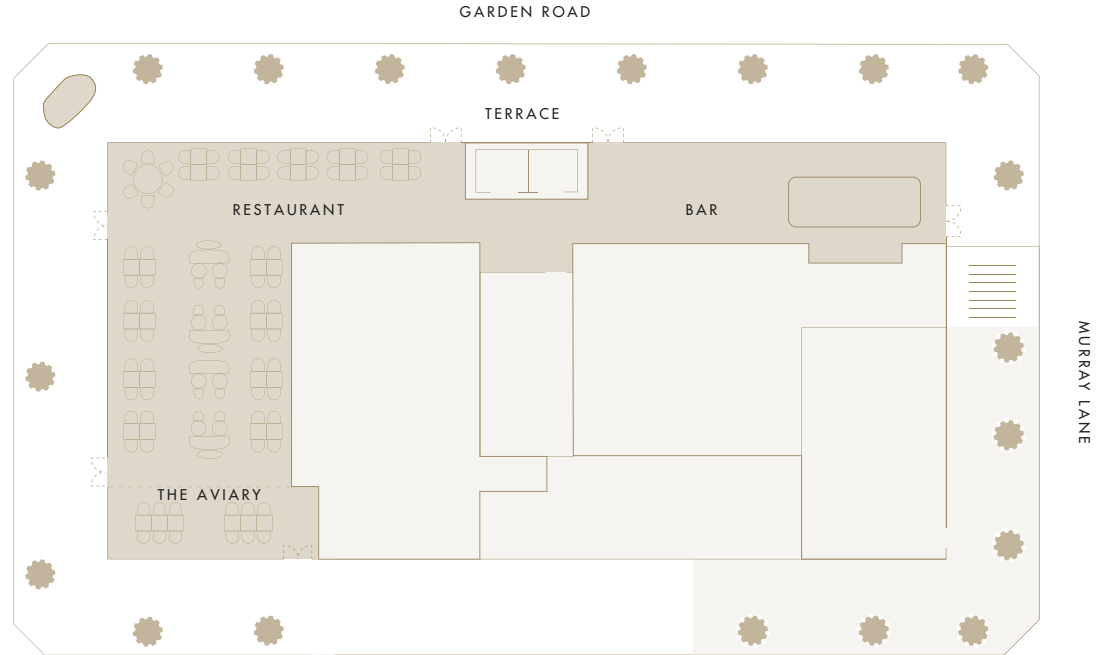
POPINJAYS

## ROOFTOP

### Popinjays

Whether you book the indoor space, the outdoor terrace, or exclusively hire this spectacular venue, a panoramic view of Hong Kong's dynamic cityscape is an unforgettable gift you will bestow upon your guests.

Enjoy modern European specialties served in the glass-walled dining room. Alternatively, opt for the exclusive private room that seats 20 with a private adjoining terrace. Outside on Hong Kong's finest rooftop terrace, up to 400 people can take in the city's lights and sights over fine wines, beers and sensational cocktails.



Venue	Set Up	Area		Headroom	
	Cocktail	Sqm	Sqf	H(m)	H(f)
RESTAURANT	120	210	2,260	3.1	10
INDOOR BAR	60	85	915	3.1	10
TERRACE	400	360	3,865		
THE AVIARY AND ITS TERRACE	30 (Upon request)				

## THE MURRAY

HONG KONG

A NICCOLO HOTEL

Capacities are indicative and subject to regulation approval.





THE MURRAY, HONG KONG

THE MURRAY



## WE TAKE EXTRA STEPS FOR YOUR WELL-BEING

At The Murray, Hong Kong, our guests are always our priority. We stay focused on what matters the most – your comfort and well-being. We are proud to say we have implemented extra hygiene measures and procedures to welcome your next visit. Frequent sanitisation across all public and back of house areas are carried out every hour daily.

Additional measures adopting the latest technologies are taken at The Murray:

### 1. H-Ion Cluster Air Purifier

- H-Ion Cluster Air Purifier have been installed since the hotel opened. The Murray is the first hotel in Hong Kong to apply this technology throughout its premises.
- Each unit covers 40 square metres to 200 square metres depending on air flow. There is a minimum of 27,000 square metres of coverage.
- A high-energy ion cluster is used to oxidise viruses, germs, bacteria, odour molecules and pollutants.
- Laboratory test reports show 98.83% efficiency in the removal of SARS-CoV-2, the virus that causes COVID-19.

### 2. Air Exchange Rate

- To ensure indoor air quality, air exchange rates at our dining facilities exceed the government's requirement by over 30%.

### 3. Recognised Certifications

- Sharecare VERIFIED® Health Security with Forbes Travel Guide.
- Anti-Epidemic Hygiene Measures Certification from the Hong Kong Quality Assurance Agency.

### 4. All guestrooms, restaurants and public areas are sanitised with AMAZINGVERDE™ MB-02E Disinfectant

- A natural formulation of pharmaceutical grade and environmentally friendly antimicrobial solution.
- Contains Zoono Z-71 Microbe Shield which shows greater than 99.99% efficacy against the COVID-19 surrogate, feline coronavirus, in laboratory tests.
- Treats pathogens for up to 30 days on surfaces and a regular re-application schedule is in place.

### 5. Vaccination Rate Hits 99%

As part of the hotel's commitment to provide a healthy and welcoming environment for guests and colleagues, over 99% of hotel employees are fully vaccinated against COVID-19.



# THE MURRAY

HONG KONG

A NICCOLO HOTEL

22 COTTON TREE DRIVE, CENTRAL, HONG KONG SAR, CHINA T +852 3141 8888 THEMURRAY@NICCOLOHOTELS.COM



THE MURRAY, HONG KONG



THEMURRAYHK

NICCOLOHOTELS.CN | NICCOLOHOTELS.COM